



CEEN Fittings

- Conduit fittings comply with the relevant SABS requirements. This also includes flame and UV resistant material
- Installation is quick and easy with a minimum of tools required to complete the job.
- PVC Conduit fittings provide facility for a neat installation, whether surface or flush mounted.
- PVC Conduit fittings will not rust or corrode and are unaffected by water, most acids, oxidising agents and electrolyte action.



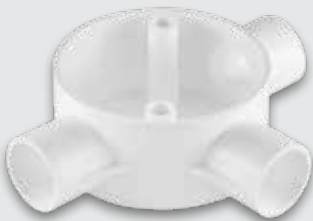
1 Way Round Box Side Entry

Description	Box	Pack	Part Number
20mm	200	20	9010
25mm	200	20	9011



2 Way Round Box Side Entry

Description	Box	Pack	Part Number
20mm Thru	200	20	9012
25mm Thru	200	20	9013



3 Way Round Box Side Entry

Description	Box	Pack	Part Number
20mm	200	20	9014
25mm	200	20	9015

4 Way Round Box Side Entry

Description	Box	Pack	Part Number
20mm INT	100	20	9016
25mm INT	100	20	9017



8 Hole Round Box Side and Back Entry

Description	Box	Pack	Part Number
20mm	300	20	9018



4 Hole Round Box Back Entry

Description	Box	Pack	Part Number
20mm	300	20	9019



2 Way Side Entry Angle Box

Description	Box	Pack	Part Number
20mm	200	20	9020
25mm	200	20	9021





"U" Conduit Box Side Entry

Description	Box	Pack	Part Number
20mm	200	20	9022
20mm Wide	200	20	9028



"Y" Conduit Box Side Entry

Description	Box	Pack	Part Number
20mm	200	20	9023



1 Spout Loop-In Box

Description	Box	Pack	Part Number
20mm	200	20	9024



2 Spout Loop-In Box

Description	Box	Pack	Part Number
20mm	200	20	9025

3 Spout Loop-In Box

Description	Box	Pack	Part Number
20mm	200	20	9026



4 Spout Loop-In Box

Description	Box	Pack	Part Number
20mm	200	20	9027



Wall Boxes (L x W x D)

Description	Box	Pack	Part Number
100 x 50 x 36mm	150	10	9036
100 x 50 x 36mm with Spout	150	10	9037
100 x 50 x 50mm	150	10	9040
100 x 50 x 50mm with Spout	150	10	9041



Wall Boxes (L x W x D)

Description	Box	Pack	Part Number
100 x 100 x 36mm	100	10	9038
100 x 100 x 36mm with Spout	100	10	9039
100 x 100 x 50mm	100	10	9042
100 x 100 x 50mm with Spout	100	10	9043





SAU Extension Box

Description	Box	Pack	Part Number
SAU40 (100 x 100mm)	70	10	9050
SAU20 (100 x 50mm)	100	10	9051



Extension Box (L x W x D)

Description	Box	Pack	Part Number
130 x 86 x 41mm	100	10	9052
130 x 86 x 41mm with knock outs	100	10	9053



Extension Box (L x W x D)

Description	Box	Pack	Part Number
130 x 130 x 41mm	70	10	9054
130 x 130 x 41mm with knock outs	70	10	9055



Dome Lid

Description	Box	Pack	Part Number
Lid Domed M20 Fem Thread	600	100	9075

Self Locating Lid

Description	Pack	Part Number
50mm Circular	100	9072
Gasket M1E EL/3	100	9541



Oversize Lid

Description	Box	Pack	Part Number
85mm	500	50	9073
97mm	500	100	9074



Cable Entry Pipe

Description	Bundle	Part Number
50 x 1800 x 90 Angle Pipe (Grey Only)	10	9183/605



Couplings

Description	Box	Pack	Part Number
20mm	2000	50	9060
25mm	1000	50	9061
32mm	200	20	9062
40mm	200	20	9063
50mm	100	10	9064



Reducer

Description	Box	Pack	Part Number
25mm - 20mm			9059





Male Adaptor			
Description	Box	Pack	Part Number
20mm	2000	50	9080
25mm	1000	50	9081
32mm	400	20	9082
40mm	200	20	9083
50mm	100	10	9084



Female Adaptor			
Description	Box	Pack	Part Number
20mm	2000	50	9090



Solid Bend			
Description	Box	Pack	Part Number
20mm	200	20	9100
25mm	100	10	9101
32mm	40	-	9102
40mm	30	-	9103
50mm	20	-	9104



Flexible Strap Saddle			
Description	Box	Pack	Part Number
20mm	3000	100	9110
25mm	2000	100	9111
32mm	1000	100	9112
40mm	500	50	9113
50mm	400	50	9114

Spacebar Saddle

Description	Box	Pack	Part Number
20mm	1000	100	9116
25mm	1000	100	9118



Inspection Elbow

Description	Box	Pack	Part Number
20mm	200	20	9130



Inspection Bend

Description	Box	Pack	Part Number
20mm	200	20	9132



Inspection Tee

Description	Box	Pack	Part Number
20mm	200	20	9131





Extension Ring			
Description	Box	Pack	Part Number
19mm	200	50	9141
29mm	200	50	9142
48mm	200	20	9143



Surface Box and Lid			
Description	Box	Pack	Part Number
82 x 82 x 30mm	100	20	9150
82 x 82 x 30mm Box Only	200	20	9151
82 x 82 x 30mm Lid Only	120	20	9070



Surface Box and Lid			
Description	Box	Pack	Part Number
142 x 82 x 30mm	120	20	9152
142 x 82 x 30mm Box Only	120	20	9153
142 x 82 x 30mm Lid Only	120	20	9071



Weather Proof Box		
Description	Box	Part Number
102 x 102 x 45mm MAB 44A	60	9162
102 x 102 x 57mm MAB 44B	50	9163
102 x 102 x 77mm MAB 44C	40	9164

Wall Box - Flush Mount

Description	Box	Pack	Part Number
75 x 75mm	150	30	9170
150 x 75mm with 12 knock outs	120	12	9171



PVC Binding Fluid

Description	Box	Part Number
200ml	20	9184



Splash Proof Box

Description	Box	Pack	Part Number
Splash Proof Box - IP44			9180



Screws

Description	Box	Part Number
M5 x 20 Courte Sink Screw	100	3841.0039



CRABTREE CATALOGUE

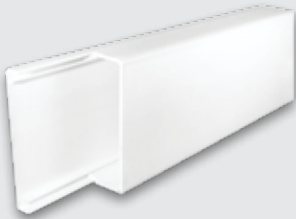
CMS RANGE - COMPACT MINI TRUNKING

Construction

- Manufactured from white, high impact resistant PVC, which satisfy the requirements of the SABS 1084-2-1 Code of practice, ISO9002.
- Supplied complete with base and clip fastening lid which provides facility for inconspicuous wiring routes in domestic and commercial situations.
- Complete range of fittings available to make tile surface trunking system adaptable to any room configuration.
- Will not rust and is impervious to most mineral acids and alkalis.
- Compact trunking is self-coloured white and provides an excellent base if painting is required for decorative purposes.

Installation

- Trunking is designed for any surface installation.
- Installation is quick and easy by using wood screws on wooden surfaces or drilling into masonry and fixing with rawl plugs.
- Secure lip on lid fastening prevents unauthorised interface with electrical circuits - lid has to be peeled off base from end to end.
- Trunking standard lengths, YT/1 in 2 meters, all others in 3 meters. Available in white.



Compact Mini Trunking

Description	Bundle	Part Number
16 x 16mm x 2m (YT/1)	50m	9310
25 x 16mm x 3m (YT/2)	30m	9311
40 x 16mm x 3m (YT/3)	30m	9312
40 x 25mm x 3m (YT/4)	30m	9313
40 x 25mm x 3m (YT/5)	30m	9314
100 x 40mm x 3m (NBT/4)	6m	9308
100 x 40mm x 3m (NBT/4TC)	6m	9309



Compact Mini Trunking Accessories

Description	Pack	Part Number
16A SSO CP (NBT4) WH + Mounting Holes	10	9345
Socket Insertion for NBT/4 CSO/1 White	10	9189
Stop End NBT/4	10	9364

Cover Available to fit Diamond Ducting Modules (Yoke for Cover = 10001/100 - 3 x 25mm)

Stop Ends for Compact Mini Trunking

Description	Pack	Part Number
16 x 16mm (YEP/1)	20	9400
25 x 16mm (YEP/2)	20	9401
40 x 16mm (YEP/3)	10	9402
40 x 25mm (YEP/4)	10	9403
40 x 40mm (YEP/5)	10	9404



CRABTREE CATALOGUE

CMS RANGE - CABLE LINE TRUNKING

Construction

- Extruded from flame retardant rigid PVC.
- Supplied as a unit comprising base and clip-on lid system requiring no screws or fasteners; lid cannot separate accidentally.
- Robust – protects cables and conductors against mechanical damage.
- Does not rust.
- Will not attract termites and rodents.
- Self coloured grey and white.

Installation

- Can be suspended or surface mounted.
- Lightweight (the weight of equivalent steel section) makes installation speedy and easy, which leads to advantage of saving time and money.

Trunking Standard length 3 metres.



Cable Line Trunking

Description	Bundle	Part Number
50 x 50mm x 3m (CLT/1) Grey	12m	9300/605
75 x 50mm x 3m (CLT/2) Grey	12m	9301/605
75 x 75mm x 3m (CLT/3) Grey	12m	9302/605
100 x 50mm x 3m (CLT/4) Grey	6m	9303/605
100 x 75mm x 3m (CLT/5) Grey	6m	9304/605
100 x 100mm x 3m (CLT/6) Grey	6m	9305/605

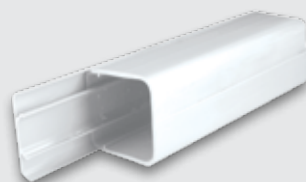


Stop Ends for Cable Line Trunking Grey

Description	Pack	Part Number
50 x 50mm	10	9480/605
75 x 50mm	10	9481/605
75 x 75mm	10	9482/605
100 x 50mm	10	9483/605
100 x 75mm	10	9484/605
100 x 100mm	10	9485/605

Cable Line Trunking White

Description	Bundle	Part Number
50 x 50 x 3mm (CLT/1) White	12m	9300
75 x 50 x 3mm (CLT/2) White	12m	9301
75 x 75 x 3mm (CLT/3) White	12m	9302
100 x 50 x 3mm (CLT/4) White	6m	9303
100 x 100 x 3mm (CLT/6) White	6m	9305



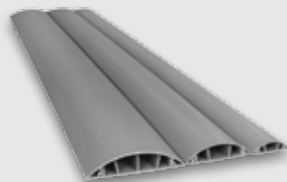
Stop Ends for Cable Line Trunking White

Description	Pack	Part Number
50 x 50mm (TEP/1)	10	9480
75 x 50mm (TEP/2)	10	9481
75 x 75mm (TEP/3)	10	9482
100 x 50mm (TEP/4)	10	9483
100 x 100mm (TEP/6)	10	9485



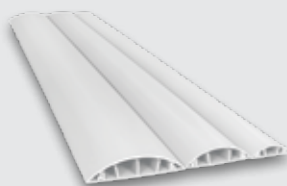
Halfmoon Trunking - Grey

Description	Bundle	M/Bundle	Part Number
25mm x 8mm x 2m Half-Moon	50	100	9320
35mm x 10mm x 2m Half-Moon	25	50	9321
50mm x 15mm x 2m Half-Moon	20	40	9322
70mm x 20mm x 2m Half-Moon	20	40	9323



Halfmoon Trunking - White

Description	Bundle	M/Bundle	Part Number
25mm x 8mm x 2m Half-Moon	50	100	9320/605
35mm x 10mm x 2m Half-Moon	25	50	9321/605
50mm x 15mm x 2m Half-Moon	20	40	9322/605
70mm x 20mm x 2m Half-Moon	20	40	9323/605





Glands		
Description	Pack	Part Number
M25 Gland 01 Seal BK	100	9234/608



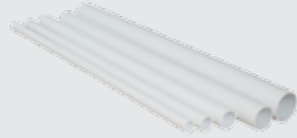
Grommets			
Description	Pack	Part Number	
Grommet 3/8X5/16X1/16 Black (0.95cmx0.79cmx0.42cm)	100	9240/608	
Grommet 1/2X3/8X1/16 Black (1.27cmx0.95cmx0.16cm)	100	9241/608	
Grommet 3/4X5/32X1/16 Black (1.91cmx0.40cmx0.16cm)	100	9242/608	
Grommet 9/16X7/16X1/8 Black (1.43cmx1.11cmx0.32cm)	100	9243/608	
Grommet 1/4X3/16X1/32 Black (0.64cmx0.48cmx0.07cm)	100	9246/608	



Grommets			
Description	Colour	Part Number	
Grommet 1X7/8X1/32 Black (2.54cmx2.23cmx0.08cm)	100	9247/608	
Grommet 1/2X5/16X1/16 Black (1.27cmx0.80cmx0.16cm)	100	9248/608	
Grommet 3/8X1/4X1/16 Black (0.95cmx0.64cmx0.16cm)	100	9249/608	
Grommet 5/16X7/32X1/16 Black (0.79cmx0.56cmx0.16cm)	100	9250/608	

SABS Conduit

Description	Bundle	M/Bundle	Part Number
20mm x 4m	25	100m	9001
25mm x 4m	25	100m	9002
32mm x 4m	10	40m	9003
40mm x 4m	10	40m	9004
50mm x 4m	5	20m	9005



Flexible Conduit

Description	Bundle	M/Bundle	Part Number
20mm (MEDIUM GRADE)	1	50m	PC2000
25mm (MEDIUM GRADE)	1	50m	PC2500



