

# THAT WHICH IS BUILT SOUNDLY **ENDURES WELL**

CLASSIC



DIAMOND



TOPAZ



# CLASSIC RANGE

Built For Life

The Classic Range is **BUILT FOR LIFE**. It is very expansive and as a steel range is highly durable and reliable. It is locally manufactured and is SABS approved.

## Switches



2580 + 6540/1



2471P + 6541/101P



2472P + 6542/101P



2473P + 6543/101P



2487P + 6587/101P

## Sockets



6896P + 6546/101P



6857P + 6527/101P



6867/001P + 6530/101P



6897/101P



6970/101P including wall box

## USB Combo



6962/001P + 6532/101P

## LED Dimmer



1954/101P

## Bell Press Dimmer



2447/001

## Circuit Breaker Sockets - 6, 10, 16 Amp



Industrial  
5051/16WCP



6869/16WC  
6869/06WC  
6869/10WC

## Industrial Switches & Sockets



7370P



7372P



7379



7392/001P



1460WP



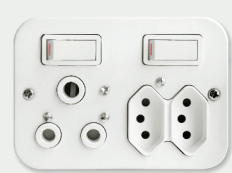
1471W



7395



7394



7393



7396

## Classic Cover Plate Colour Options



WHITE



RED



BLUE



BLACK



SATIN CHROME



STAINLESS STEEL

Note: Colour swatches are only an indication of the colour - do not use for colour matching purposes.

THAT WHICH IS BUILT SOUNDLY **ENDURES WELL**  
"BEWARE OF IMITATION PRODUCTS"

The Diamond Range represents **STYLISH DURABILITY**. This expansive modular range crosses the divide between upmarket styling and classic durability. It is locally manufactured and is SABS approved.

# DIAMOND RANGE

Stylish Durability

### Switches



10011/601

### Rotary Dimmers



10802/601

### Isolator



10230/601

### Shaver Sockets



10400/601

### Bell Press with "Dim" Symbol



10930/601

### Combo Sockets



12158/001



12157/601



10052/6

Design your own combinations using our ducting modules



12018/601 + 12710/000



12017/601 + 12720/000

Design your own combinations using our ducting modules



10750/000 + 10916/601



10750/000 + 10916/601

### Clusters/Ducting Range



Design your own combination using our innovative Cluster Range Available in 6, 9 and 18 Way with a wide range of ducting options

### LED Dimmers

125W & 500W



### USB



11977/008



11971/001

### SAT



11998/001



11996/001

### HDMI



11908/001



11907/001

### Diamond Cover Plate Colour Options



WHITE RED BLUE BLACK SILVER GREY CHAMPAGNE CHARCOAL  
Note: Colour swatches are only an indication of the colour - do not use for colour matching purposes.



The Topaz Range is **FRESHLY URBAN**. It has a young and fresh look that compliments the lines of living spaces.

### Switches



15112/601



15123/601



15133/601



15142/601

### Dimmers



15111/601BP



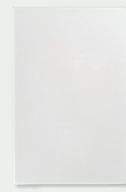
15121/601BP

### 2X4 Isolator



15125/601

### Blanks



15100/601P

15200/601P

### USB Combo



15231/601

### Combo Sockets



15223/601



15224/601

### Isolator



15225/601 / 15226/601

### SAT



15203/601

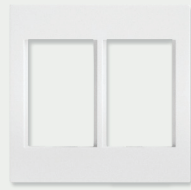
### GRID



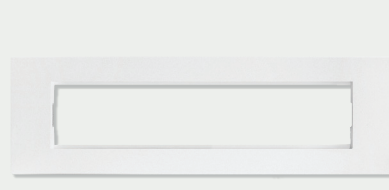
15301/601



15302/601



15303/601



15304/601

# TOPAZ RANGE

Freshly Urban.

# DOMESTIC RANGE

In today's homes many electrical items are far away from a socket, but with the help of our extension cord range these items may be used in any part of the home. Our wide range of adapters and multi-plugs allow you to safely plug more than one device into just one socket. We also have our range of quality solid pin plug tops that are locally manufactured.

## Power-on Adaptors



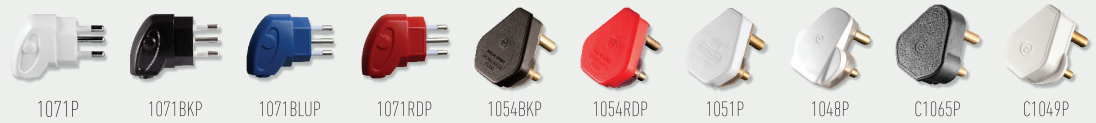
## Extension Cords



## Multiplugs

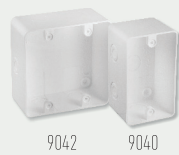


## Plug Tops



Crabtree's Cable Management System range is quick and easy to install, will not rust or corrode and is impervious to most mineral acids and alkalis. Our CMS products range from electrical conduit, ISO 9008 trunking, PVC conduit fittings, couplers, glands, wall boxes and our enclosures are flame and UV resistant.

## Wall Boxes



## Extension Boxes



## Weather Proof Boxes



## Spout Loop-in Box



## Side Entry Conduit Box



## Inspection Tee



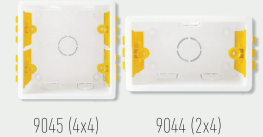
## Adaptors



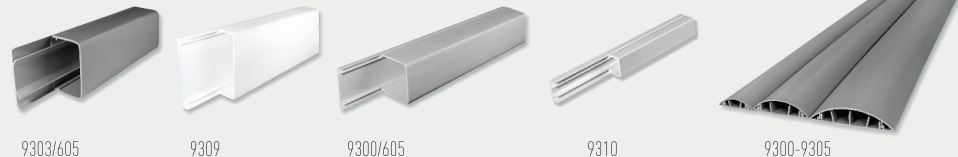
## Saddles



## Electrical DryWall Boxes



## Trunking



# CMS RANGE

(Cable Management System)