

Region Details:

Wadeville
Cnr Wadeville & Davidson Roads
Wadeville
Germiston
Tel: (011) 874 7600
Email: orders@crabtree.co.za
Website: www.crabtree.co.za

Durban
Unit 2, 9 Beechfield Crescent
Springfield Park
Durban
Tel: (031) 579 1105
Email: nazeem.abdoolla@crabtree.co.za

Cape Town
Unit 2 Creation Park
Computer Road
Montague Gardens
Tel: (021) 555 0644
Email: anthony.mukhram@crabtree.co.za

East London
15 Brill Street
Arcadia
East London
Tel: (043) 743 2310
Email: shattingh@crabtree.co.za

Port Elizabeth
25 Short Street
North End
Port Elizabeth
Tel: (041) 581 4001
Email: brendan.legrange@crabtree.co.za

George
111 Fichat Street
George Industria
George
Tel: (044) 884 0640
Email: gwilson@crabtree.co.za



THAT WHICH IS BUILT SOUNDLY **ENDURES WELL**



slim. elegant. easy-to-use

COMPLIES TO THE DIMENSIONS OF SANS 164-2



COMPANY PROFILE

Crabtree South Africa has steadily grown to become the leading electrical accessories manufacturer in South Africa and a dominant regional player. A wide range of electrical wiring accessories such as switches and sockets (domestic/commercial and industrial), trunking and fittings and a fit for purpose range of domestic leads and adapters are supplied into the building/construction, and general industrial sectors. Product specific information can be accessed at www.crabtree.co.za.



COMPANY MISSION

To develop world class operational capabilities within our facilities to supply market leading, branded products for the installers & users of low voltage electrical infrastructure in South Africa, the UK and Sub Saharan Africa to create a convenient, reliable and safe electrical environment inside living spaces.

COMPANY VISION

We develop quality products for the installers and users of low voltage electrical infrastructure to create a convenient, safe and reliable electrical environment inside living spaces.

THAT WHICH IS BUILT SOUNDLY **ENDURES WELL**



THAT WHICH IS BUILT SOUNDLY
ENDURES WELL



CEEN FITTINGS

- Conduit fittings comply with the relevant SABS requirements. This also includes flame and UV resistant material
- Installation is quick and easy with a minimum of tools required to complete the job.
- PVC Conduit fittings provide facility for a neat installation, whether surface or flush mounted.
- PVC Conduit fittings will not rust or corrode and are unaffected by water, most acids, oxidising agents and electrolyte action.

4 Way Round Box Side Entry

Description	Box	Pack	Part Number
20mm	100	20	9016
25mm	100	20	9017



1 Way Round Box Side Entry

Description	Box	Pack	Part Number
20mm	200	20	9010
25mm	200	20	9011



8 Hole Round Box Side and Back Entry

Description	Box	Pack	Part Number
20mm	300	20	9018



2 Way Round Box Side Entry

Description	Box	Pack	Part Number
20mm	200	20	9012
25mm	200	20	9013



4 Hole Round Box Back Entry

Description	Box	Pack	Part Number
20mm	300	20	9019



3 Way Round Box Side Entry

Description	Box	Pack	Part Number
20mm	200	20	9014
25mm	200	20	9015



2 Way Side Entry Angle Box

Description	Box	Pack	Part Number
20mm	200	20	9020
25mm	200	20	9021





"U" Conduit Box Side Entry			
Description	Box	Pack	Part Number
20mm	200	20	9022
20mm Wide	200	20	9028

3 Spout Loop-In Box			
Description	Box	Pack	Part Number
20mm	200	20	9026



"Y" Conduit Box Side Entry			
Description	Box	Pack	Part Number
20mm	200	20	9023

4 Spout Loop-In Box			
Description	Box	Pack	Part Number
20mm	200	20	9027



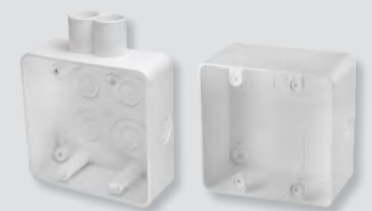
1 Spout Loop-In Box			
Description	Box	Pack	Part Number
20mm	200	20	9024

Wall Boxes (L x W x D)			
Description	Box	Pack	Part Number
100 x 50 x 36mm	150	10	9036
100 x 50 x 36mm with Spout	150	10	9037
100 x 50 x 50mm	150	10	9040
100 x 50 x 50mm with Spout	150	10	9041



2 Spout Loop-In Box			
Description	Box	Pack	Part Number
20mm	200	20	9025

Wall Boxes (L x W x D)			
Description	Box	Pack	Part Number
100 x 100 x 36mm	100	10	9038
100 x 100 x 36mm with Spout	100	10	9039
100 x 100 x 50mm	100	10	9042
100 x 100 x 50mm with Spout	100	10	9043





SAU Extension Box			
Description	Box	Pack	Part Number
SAU40 (100 x 100mm)	70	10	9050
SAU20 (100 x 50mm)	100	10	9051

Self Locating Lid		
Description	Pack	Part Number
50mm Circular	100	9072
Gasket M1E EL/3	100	9541



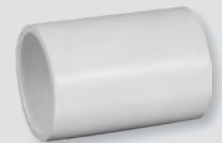
Extension Box (L x W x D)			
Description	Box	Pack	Part Number
130 x 86 x 41mm	100	10	9052
130 x 86 x 41mm with Knock Outs	100	10	9053

Oversize Lid			
Description	Box	Pack	Part Number
85mm	500	50	9073
97mm	500	100	9074



Extension Box (L x W x D)			
Description	Box	Pack	Part Number
130 x 130 x 41mm	70	10	9054
130 x 130 x 41mm with Knock Outs	70	10	9055

Couplings			
Description	Box	Pack	Part Number
20mm	2000	50	9060
25mm	1000	50	9061
32mm	200	20	9062
40mm	200	20	9063
50mm	100	10	9064



Dome Lid			
Description	Box	Pack	Part Number
Lid Domed M20 Fem Thread	600	100	9075



Reducer			
Description	Box	Pack	Part Number
25mm - 20mm			9059

Flexible Strap Saddle			
Description	Box	Pack	Part Number
20mm	3000	100	9110
25mm	2000	100	9111
32mm	1000	100	9112
40mm	500	50	9113
50mm	400	50	9114



Male Adaptor			
Description	Box	Pack	Part Number
20mm	2000	50	9080
25mm	1000	50	9081
32mm	400	20	9082
40mm	200	20	9083
50mm	100	10	9084

Spacebar Saddle			
Description	Box	Pack	Part Number
20mm	1000	100	9116
25mm	1000	100	9118



Female Adaptor			
Description	Box	Pack	Part Number
20mm	2000	50	9090

Inspection Elbow			
Description	Box	Pack	Part Number
20mm	200	20	9130



Solid Bend			
Description	Box	Pack	Part Number
20mm	200	20	9100
25mm	100	10	9101

Inspection Bend			
Description	Box	Pack	Part Number
20mm	200	20	9132





Inspection Tee			
Description	Box	Pack	Part Number
20mm	200	20	9131

Weather Proof Box			
Description	Box	Pack	Part Number
102 x 102 x 45mm MAB 44A	60		9162
102 x 102 x 57mm MAB 44B	50		9163
102 x 102 x 77mm MAB 44C	40		9164



Extension Ring			
Description	Box	Pack	Part Number
19mm	200	50	9141
29mm	200	50	9142
48mm	200	20	9143

Wall Box - Flush Mount			
Description	Box	Pack	Part Number
75 x 75mm	150	30	9170
150 x 75mm with 12 knock outs	120	12	9171
150 x 100mm with 7 knock outs			9172



Surface Box and Lid			
Description	Box	Pack	Part Number
82 x 82 x 30mm	100	20	9150
82 x 82 x 30mm Box Only	200	20	9151
82 x 82 x 30mm Lid Only	120	20	9070

Splash Proof Box			
Description	Box	Pack	Part Number
Splash Proof Box - IP44			9180



Surface Box and Lid			
Description	Box	Pack	Part Number
142 x 82 x 30mm	120	20	9152
142 x 82 x 30mm Box Only	120	20	9153
142 x 82 x 30mm Lid Only	120	20	9071

ELECTRICAL DRYWALL BOX

- Accommodates various thicknesses, min 7mm and max 25mm.
- Can be used for new or existing installations.
- Cost reduced solution compared to traditional trunking or cable management solutions.
- Made from non-conductive material with no sharp edges reducing the risks associated to earth leakage with metal back boxes and wire insulation integrity.
- The Crabtree Electrical DryWall box is made of engineering plastic which is self-extinguishing up to 650° C.
- The 'quick fix yellow lugs' allow for quick tool-free installation and firmly secure the box to the dry wall. Each box has multiple knockouts for standard electrical connectors and adapters.



Electrical Drywall Box 50 x 100mm	
Description	Part Number
50x100mm	9044



Electrical Drywall Box 100 x 100mm	
Description	Part Number
100x100mm	9045



Screws		
Description	Box	Part Number
M5 x 20 Courte Sink Screw	100	9510
M x 430 Courte Sink Screw for Drywall Box	100	9500

PVC Binding Fluid		
Description	Box	Part Number
200ml	20	9184



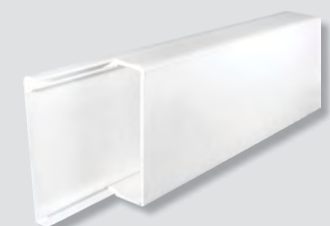
CONSTRUCTION

- Manufactured from white, high impact resistant PVC, which satisfy the requirements of the SABS 1084-2-1 Code of practice, ISO9002.
- Supplied complete with base and clip fastening lid which provides facility for inconspicuous wiring routes in domestic and commercial situations.
- Complete range of fittings available to make tile surface trunking system adaptable to any room configuration.
- Will not rust and is impervious to most mineral acids and alkalis.
- Compact trunking is self-coloured white and provides an excellent base if painting is required for decorative purposes.

INSTALLATION

- Trunking is designed for any surface installation.
- Installation is quick and easy by using wood screws on wooden surfaces or drilling into masonry and fixing with rawl plugs.
- Secure lip on lid fastening prevents unauthorised interface with electrical circuits - lid has to be peeled off base from end to end.
- Trunking standard lengths, YT/1 in 2 meters, all others in 3 meters. Available in white.

Compact Mini Trunking		
Description	Bundle	Part Number
16 x 16mm x 2m (YT/1)	40m	9310
25 x 16mm x 3m (YT/2)	60m	9311
40 x 16mm x 3m (YT/3)	30m	9312
40 x 25mm x 3m (YT/4)	30m	9313
40 x 40mm x 3m (YT/5)	30m	9314
100 x 40mm x 3m (NBT/4)	12m	9308
3000m Divider (NBT/4) (to be used with 9308)	60m	9309



Cover Available to fit Diamond Ducting Modules(Yoke for Cover = 10001/100 - 3 x 25mm)



Compact Mini Trunking Accessories		
Description	Pack	Part Number
16A SSO CP (NBT4) WH + Mounting Holes	10	9345
Socket Insertion for NBT/4 CSD/1 White	10	9189
Stop End NBT/4	10	9364



Stop Ends for Compact Mini Trunking		
Description	Pack	Part Number
16 x 16mm (YEP/1)	20	9400
25 x 16mm (YEP/2)	20	9401
40 x 16mm (YEP/3)	10	9402
40 x 25mm (YEP/4)	10	9403
40 x 40mm (YEP/5)	10	9404

CONSTRUCTION

- Extruded from flame retardant rigid PVC.
- Supplied as a unit comprising base and clip-on lid system requiring no screws or fasteners; lid cannot separate accidentally.
- Robust - protects cables and conductors against mechanical damage.
- Does not rust.
- Will not attract termites and rodents.
- Self coloured grey and white.

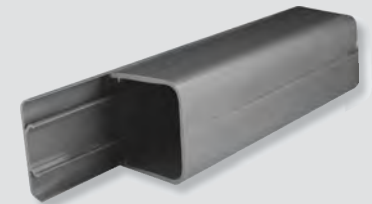
INSTALLATION

- Can be suspended or surface mounted.
- Lightweight (the weight of equivalent steel section) makes installation speedy and easy, which leads to advantage of saving time and money.

TRUNKING STANDARD LENGTH 3 METRES.

Cable Line Trunking

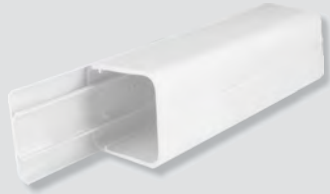
Description	Bundle	Part Number
50 x 50mm x 3m (CLT/1) Grey	12m	9300/605
75 x 50mm x 3m (CLT/2) Grey	12m	9301/605
75 x 75mm x 3m (CLT/3) Grey	12m	9302/605
100 x 50mm x 3m (CLT/4) Grey	12m	9303/605
100 x 75mm x 3m (CLT/5) Grey	6m	9304/605
100 x 100mm x 3m (CLT/6) Grey	6m	9305/605



Stop Ends for Cable Line Trunking Grey

Description	Pack	Part Number
50 x 50mm	10	9480/605
75 x 50mm	10	9481/605
75 x 75mm	10	9482/605
100 x 50mm	10	9483/605
100 x 75mm	10	9484/605
100 x 100mm	10	9485/605

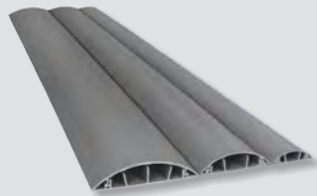




Cable Line Trunking White			
Description	Bundle	Part Number	
50 x 50 x 3mm (CLT/1) White	12m	9300	
75 x 50 x 3mm (CLT/2) White	12m	9301	
75 x 75 x 3mm (CLT/3) White	12m	9302	
100 x 50 x 3mm (CLT/4) White	12m	9303	
100 x 75 x 3mm (CLT/5) White	6m	9304	
100 x 100 x 3mm (CLT/6) White	6m	9305	



Stop Ends for Cable Line Trunking White			
Description	Pack	Part Number	
50 x 50mm (TEP/1)	10	9480	
75 x 50mm (TEP/2)	10	9481	
75 x 75mm (TEP/3)	10	9482	
100 x 50mm (TEP/4)	10	9483	
75 x 100mm (TEP/5)	10	9484	
100 x 100mm (TEP/6)	10	9485	



Halfmoon Trunking - Grey			
Description	Length Bundle	M/Bundle	Part Number
25mm x 8mm x 2m Half-Moon	10	20	9320
35mm x 10mm x 2m Half-Moon	10	20	9321
50mm x 15mm x 2m Half-Moon	10	20	9322
70mm x 20mm x 2m Half-Moon	10	20	9323



Halfmoon Trunking - White			
Description	Length Bundle	M/Bundle	Part Number
25mm x 8mm x 2m Half-Moon	10	20	9320/605
35mm x 10mm x 2m Half-Moon	10	20	9321/605
50mm x 15mm x 2m Half-Moon	10	20	9322/605
70mm x 20mm x 2m Half-Moon	10	20	9323/605

Glands		
Description	Pack	Part Number
M20 Gland 01 Seal BK	100	9230/608
M25 Gland 01 Seal BK	100	9234/608



Grommets		
Description	Pack	Part Number
Grommet 3/8X5/16X1/16 Black (0.95cmx0.79cmx0.42cm)	100	9240/608
Grommet 1/2X3/8X1/16 Black (1.27cmx0.95cmx0.16cm)	100	9241/608
Grommet 3/4X5/32X1/16 Black (1.91cmx0.40cmx0.16cm)	100	9242/608
Grommet 9/16X7/16X1/8 Black (1.43cmx1.11cmx0.32cm)	100	9243/608
Grommet 1/4X3/16X1/32 Black (0.64cmx0.48cmx0.07cm)	100	9246/608



Grommets		
Description	Colour	Part Number
Grommet 1X7/8X1/32 Black (2.54cmx2.23cmx0.08cm)	100	9247/608
Grommet 1/2X5/16X1/16 Black (1.27cmx0.80cmx0.16cm)	100	9248/608
Grommet 3/8X1/4X1/16 Black (0.95cmx0.64cmx0.16cm)	100	9249/608
Grommet 5/16X7/32X1/16 Black (0.79cmx0.56cmx0.16cm)	100	9250/608
Grommet 5/8X1/2X17/64 Black	100	9251/608



Flexible Conduit			
Description	Bundle	M/Bundle	Part Number
20mm (MEDIUM GRADE)	1	50m	PC2000

